



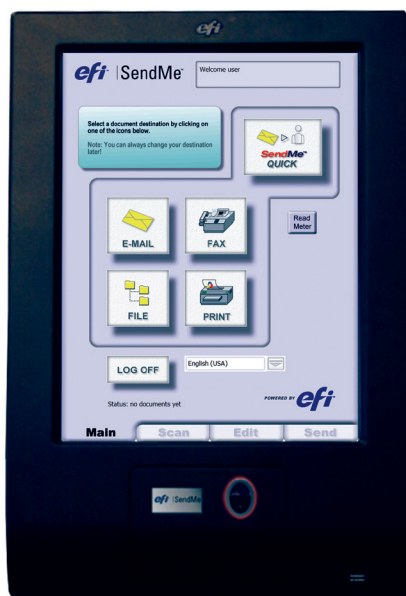
EFI SendMe

Turn your Multi-Functional Printer into a Document Portal

Corporate Office Solutions



Get Significantly More than Just “Scan to E-Mail” or “Document Capture”



Ideal document management solution for:

- Healthcare
- Legal
- Financial Services
- Government

Scan to Microsoft Word or PDF Easily

With its powerful OCR capability, EFI SendMe™ can automatically convert any file into a Microsoft Word or PDF file for editing and reformatting. It also eliminates the need to re-type documents that are only available in paper form, saving time and resources.

Scan to Microsoft Exchange for Secure Document Distribution

EFI SendMe is fully integrated into the existing e-mail infrastructure and provides powerful document distribution capabilities with state-of-the-art authentication and security. Accessing the existing corporate authentication schemes, SendMe provides the same protection and audit trail that users get when they send e-mails from their desktop using Microsoft Exchange/Outlook.

Offers Powerful Authentication Functionality

The solution allows users to select their name from the global address book and enter their password either on a keyboard, or by linking their authentication credentials to an RFID Card reader or Biometric Fingerprint reader. EFI SendMe authenticates the user and embeds the sender's name and e-mail address in the "From" field, and a copy of the message is stored in the user's Sent Items folder in Exchange.

Powerful sender authentication and audit trail functionality is achieved using the Microsoft Exchange sender authentication and a "Copy to Sender" and "Read & Delivery Receipts" options for audit trails.

Document distribution is managed with the following e-mail functionality:

- All e-mails can be traced back to an individual.
- User receives a copy in Sent Items folder.
- A non-delivery receipt is sent to the user if an e-mail address cannot be found.
- Users can ask for "Read & Delivery Receipts"
- No anonymous e-mail can be sent.

Integrate your Business Processes Seamlessly with Leading Solutions

EFI SendMe allows users to customize workflow and interface with over 80 pre-packaged connectivity options for many popular document management systems, fax servers and security integrations or use the simple application program interface (API) scripting language for a truly customized experience.

The solution also comes bundled with Net-Connect, the premier connectivity option for "Scan To Network" operations on the market today. Using NetConnect, administrators can define preset file repositories (e.g., e-mail, SMB or FTP) with dynamic path information, dynamic meta-data (exported as XML or CSV) and full Windows file security.

To further streamline operations, users can designate document types to be routed to preset destinations including e-mail, fax, hot folders, network printers, and document management systems.



Harness Touch-Screen Convenience and Control

Combining plug-and-play utilities with touch-screen simplicity, EFI SendMe features a large “document size” screen that provides full-page or thumbnail preview capability. The intuitive touch-screen interface coaches users through all workflow processes, while one-click workflows provide speed and efficiency for common tasks. EFI SendMe is easy to set up and requires minimal training to achieve working familiarity.

While many users find typical copier LCD displays confusing to operate, EFI’s SendMe is as simple as an ATM to navigate, and it combines the functionality and speed to enhance efficiency and offer measurable productivity.

EFI SendMe ensures document integrity with its unbroken workflow that never separates users from their document, preventing potential security issues. It also avoids distractions, decreases errors and increases productivity.

Enjoy Many Touch-Screen Editing Tools for Greater Control

EFI SendMe’s powerful, yet easy-to-use editing tools allow operators to perform common document clean-up and editing tasks. Unwanted marks and borders may be cleaned with erase, deskew and despeckle tools, and contrast and brightness are easily adjusted.

It also allows users to designate draft, approved or confidential material with handy digital “rubber stamps,” and enables them to add PDF annotations for viewing in Acrobat Reader. Legal documents can be marked and organized with digital Bates Stamping.

EFI SendMe allows users to select the optimum file size to provide the best document quality. Convert paper documents into Microsoft Word and industry-standard digital file formats: PDF, MTIFF, TIFF, JPG, RTF and Microsoft Word.

Execute Fast Document Searches

Document searches are quick and easy with EFI SendMe using its optical character recognition (OCR) feature on PDF files to automatically create a hidden text layer, enabling users to search scanned documents for words, extract text, and perform document indexing. Using the same OCR functions, all PDFs created in SendMe retain the document format and are viewable on Blackberry®, Treo® and PDA mobile devices.

Add Value, Flexibility and Ease of Use with Advanced Technology

EFI SendMe connects to any networked MFP or TWAIN-compliant Scanner to convert paper documents to a digital format and streamlines workflow. EFI SendMe easily integrates with corporate network and e-mail lists. A simple administrator’s application lets users customize their interface and enjoy centralized management of multiple networked units. EFI SendMe also tracks usage, provides 128-bit encryption for additional security, and implements advanced Fiery® smart compression technology to enhance both security and speed.

- Capture, combine and distribute all paper and digital documents.
- Scan to MS Exchange — Direct access to core authentication infrastructure.
- Scan to MS Word — Fast conversion of paper documents to MS Word.
- Import PDF’s & Image Files — Combine PDF and Image files with captured documents.
- Real-time editing & assembly with correction and annotation.
- Authentication and security based on standard network protocols.
- Over 80 dynamic connectors for document management, cost recovery, fax-imaging systems.



Get Interactive Authentication, Fingerprint and RFID Card Options

EFI SendMe offers fast, efficient and secure fingerprint and RFID Card options, eliminating the need to retype passwords.

And because the Fingerprint and RFID Card options are self-contained, no customization of the user's access control system is required.

The EFI SendMe RFID Card Authentication uses standard network authentication and supports the HID, Indala/Motorola and Cassi-Rusco standards used by over 50 manufacturers of RFID card systems.

Import Images and Headers Easily

Users can import and assemble files from digitalmedia including USB devices and digital memory sticks.

Make Printing Secure with "Park and Print"

Unattended printing of documents can be a severe security risk, and with recent Government imposed confidentiality requirements, a corporate liability. EFI SendMe's secure "Park & Print" capability allows users to send print jobs to a SendMe connected Multi-Functional Peripheral (MFP) and park the prints until the user goes to SendMe and releases them for print using their standard Windows login for authentication. Users can then access and print only their documents after login.

EFI SendMe's secure print server also allows native file printing through the printer driver from e-mail attachments such as a BlackBerry, Treo or e-mail enabled cell phone, and every SendMe has a built-in Web page for Web-based document submission!

Beat the competition and profit with EFI's integrated Fiery, VUTEK and APPS printing solutions. Visit www.efi.com.

Print to Win

EFI (www.efi.com) is the world leader in color digital print servers, and controllers; superwide format printers and inks, industrial inkjet printing systems and print management, Web-to-print and proofing solutions. EFI is dedicated to giving customers a competitive edge with award-winning, scalable solutions from creation to print that maximize productivity and increase profits. EFI maintains 26 offices worldwide.